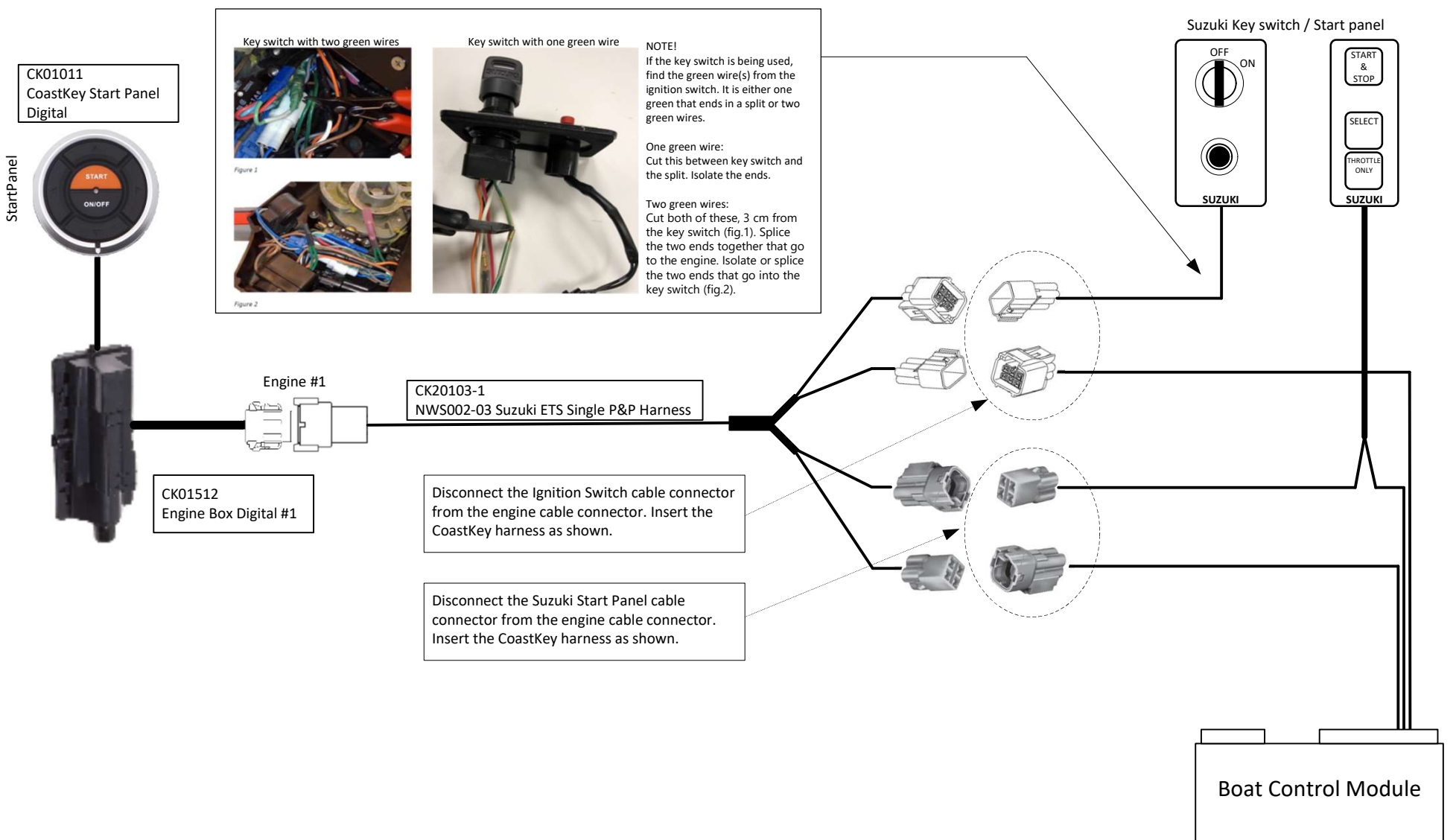


HEADING	
Title:	CoastKey Suzuki ETS Installation
Doc. Nr:	NWS021-26
Author:	Pål Sørensen
Issue date:	16-04-2020

HISTORY				
Issue number	Date	Version	Owner	Approved by
1	16-04-2020	A	Pål Sørensen	
2				
3				



Key switch with two green wires



Figure 1



Figure 2

Key switch with one green wire



NOTE!  
If the key switch is being used, find the green wire(s) from the ignition switch. It is either one green that ends in a split or two green wires.

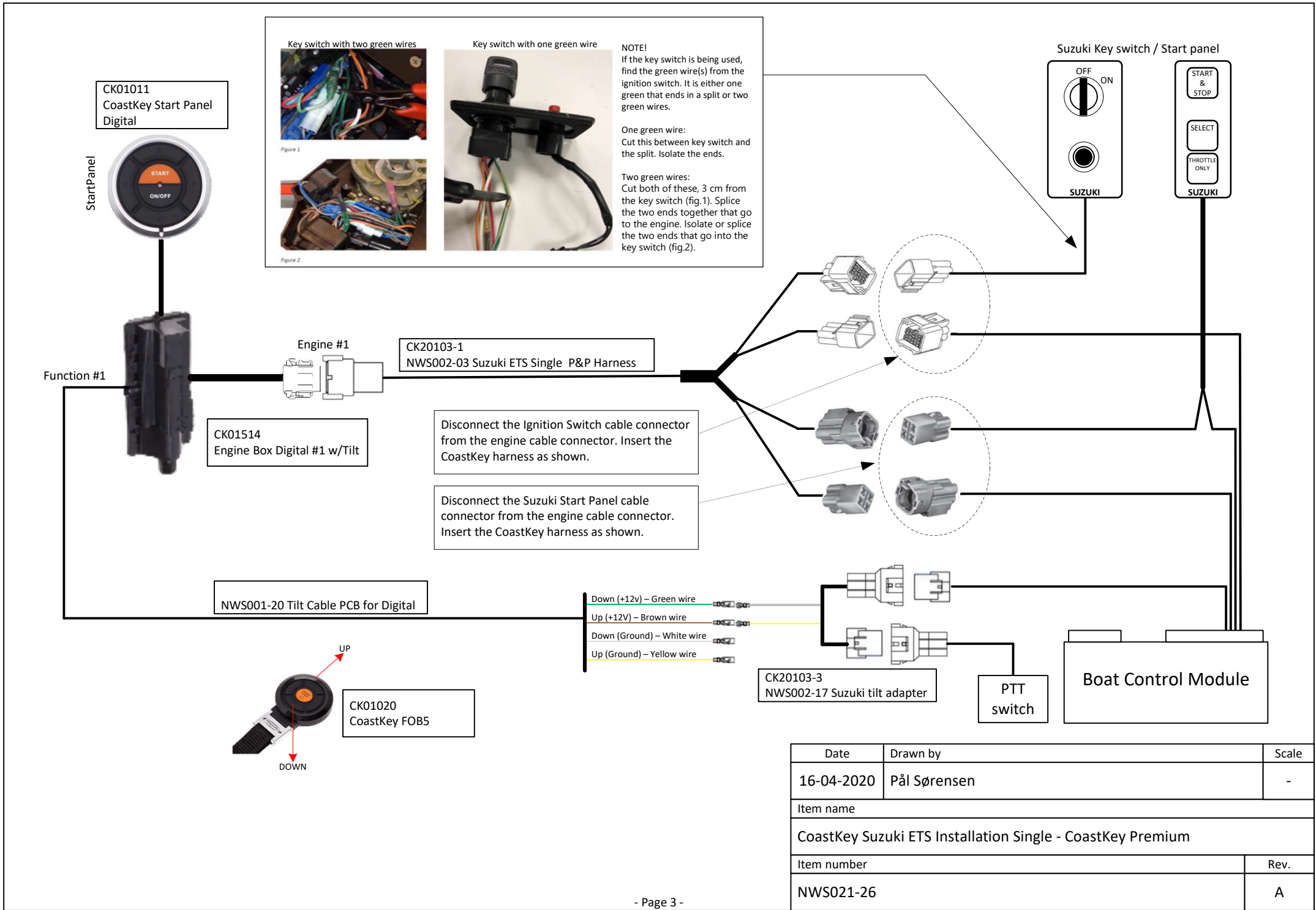
One green wire:  
Cut this between key switch and the split. Isolate the ends.

Two green wires:  
Cut both of these, 3 cm from the key switch (fig.1). Splice the two ends together that go to the engine. Isolate or splice the two ends that go into the key switch (fig.2).

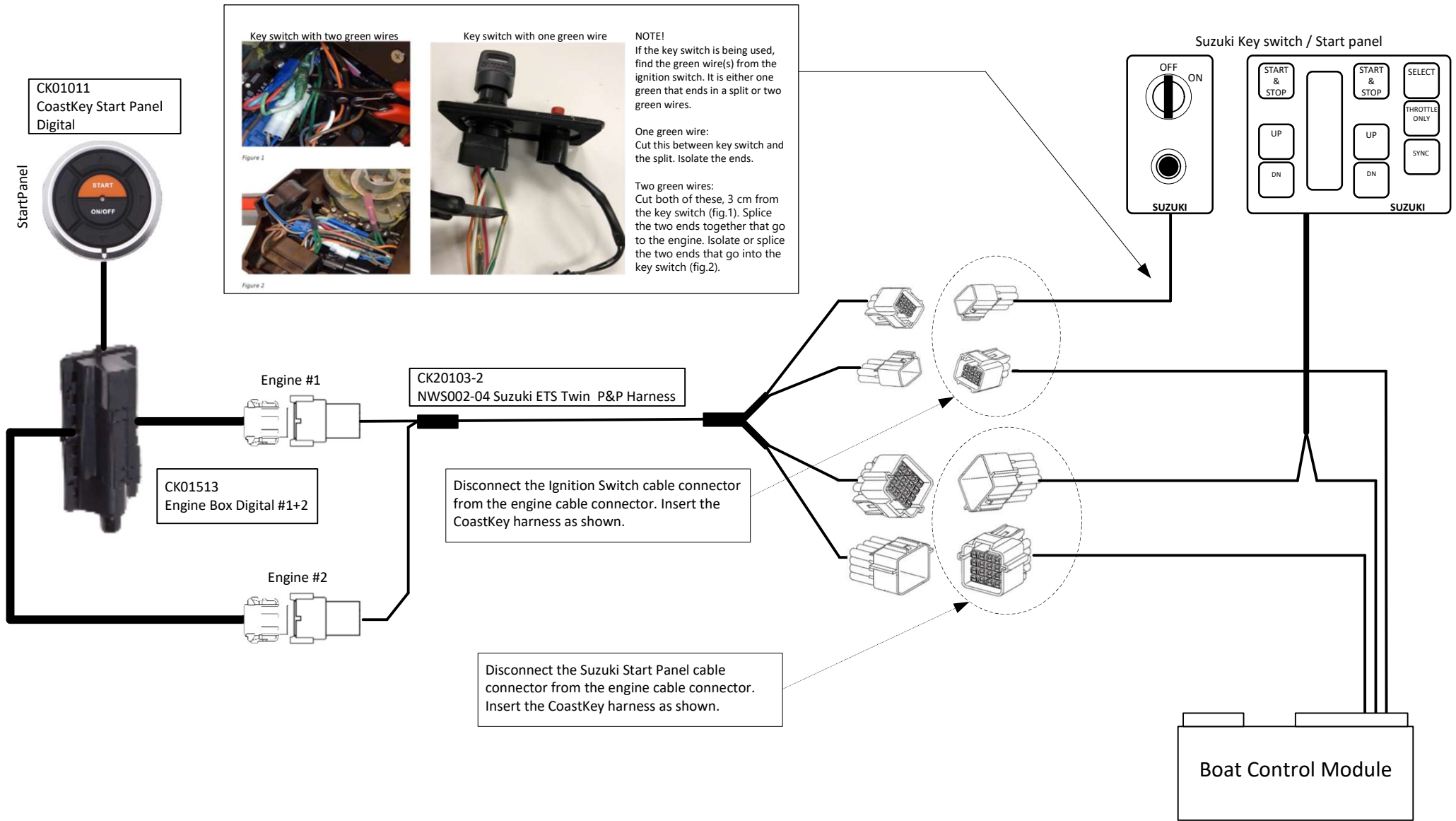
Disconnect the Ignition Switch cable connector from the engine cable connector. Insert the CoastKey harness as shown.

Disconnect the Suzuki Start Panel cable connector from the engine cable connector. Insert the CoastKey harness as shown.

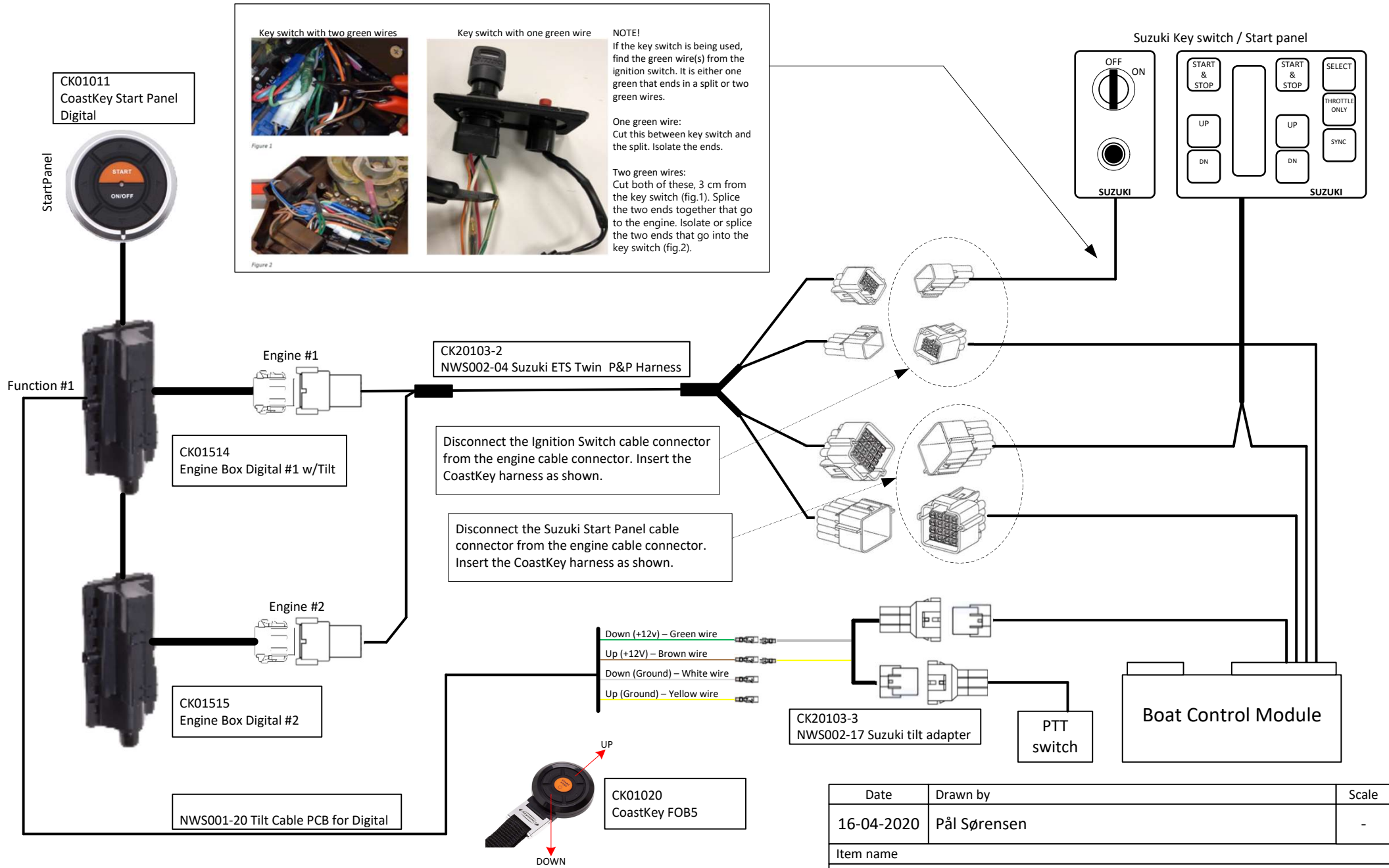
Date	Drawn by	Scale
16-04-2020	Pål Sørensen	-
Item name		
CoastKey Suzuki ETS Installation Single – CoastKey Basic and Standard Systems		
Item number		Rev.
NWS021-26		A



Date	Drawn by	Scale
16-04-2020	Pål Sørensen	-
Item name		
CoastKey Suzuki ETS Installation Single - CoastKey Premium		
Item number		Rev.
NWS021-26		A



Date	Drawn by	Scale
16-04-2020	Pål Sørensen	-
Item name		
CoastKey Suzuki ETS Installation Twin – CoastKey Basic and Standard		
Item number		Rev.
NWS021-26		A



Date	Drawn by	Scale
16-04-2020	Pål Sørensen	-
Item name		
CoastKey Suzuki ETS Installation Twin - CoastKey Premium		
Item number		Rev.
NWS021-26		A

# Disable Suzuki Keyless

In order to use CoastKey seamlessly, you must disable the Suzuki Keyless system – Follow the instructions for Function [C] below!

## STEP - 1

### 6. Utility functions

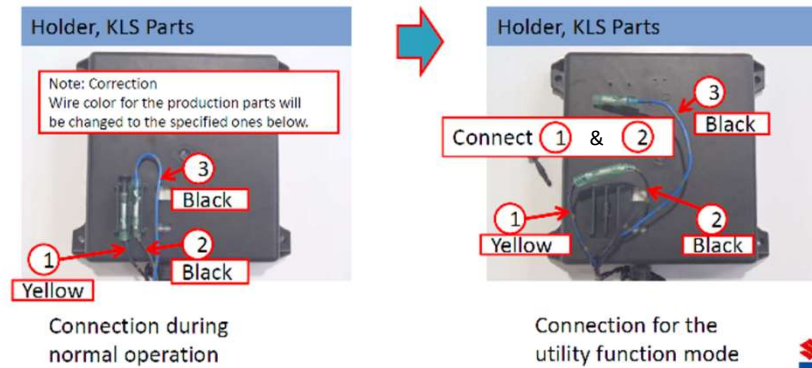
The keyless system provides three utility functions as seen below.

Function [A]: Pair additional key fob

Function [B]: Disable and restore key fob

Function [C]: Initialize ECM Use this function to disable Suzuki Keyless

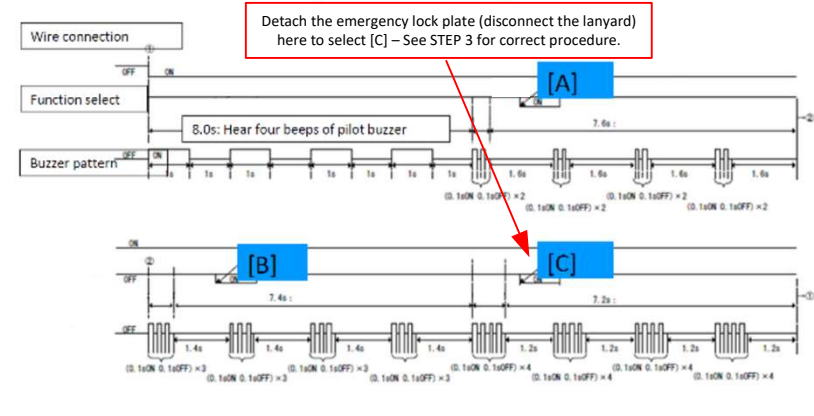
To use these functions, turn the system on (unlocked) and connect the utility function mode wire in the keyless harness assy as shown below.



## STEP - 2

To select each function, follow the next steps

1. As soon as completing the utility function mode wire connection, the buzzer starts sounding beeps in the pattern below.
2. Select the function during the selectable time by detaching the emergency lock plate from the emergency stop switch. If you missed selecting the function, retry by disconnecting and reconnecting the utility function mode wires.



Step 3 + 4



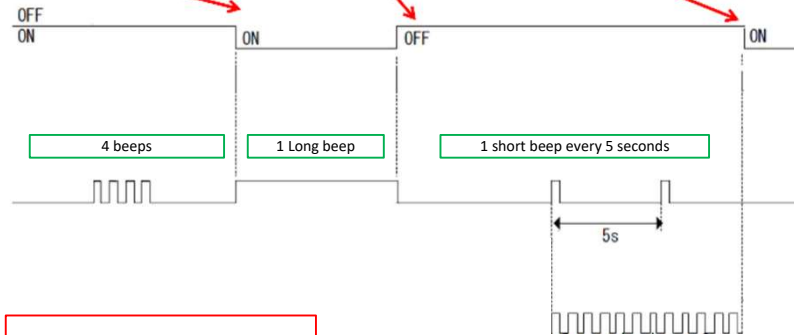


# Disable Suzuki Keyless

## STEP - 3

### Function [C]: Initialize ECM

- 1 Detach the lock plate here to select [C]
- 2 Attach the lock plate here
- 3 Return the utility function mode wire connection to the original to finish [C]



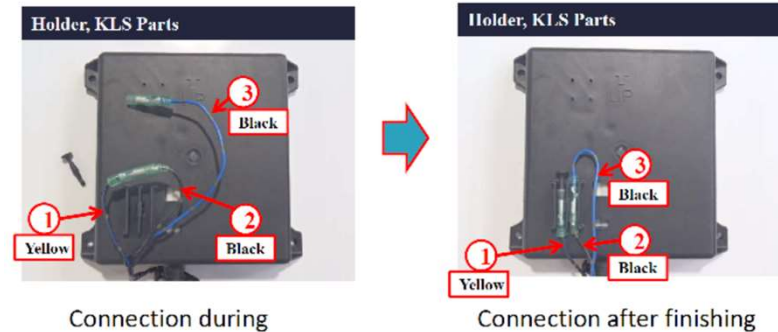
Lock plate (above) refers to the lanyard switch.



## STEP - 4

### Closing the utility function

The utility function mode wire connection has to be returned to the original connection to finish anyone of the utility functions.



**IMPORTANT! The Suzuki Keyless Fob must be removed and kept away from the boat (at least 20 meters) after this procedure or it will re-pair with the ignition and this process will have to be repeated.**